



90 YEARS
1921 - 2011



Australia's market leader in advanced concrete technology solutions, driving innovation in:



Reinforcing



Precast



Tilt-up



FORMWORK SYSTEM



Reid delivers unsurpassed value through products and services developed to make concrete construction:



Faster



Safer



More efficient



Reid Construction Systems has a history spanning 90 years as a supplier of solutions to the Australian mining and construction industries.

In the 21st century **Reid**™ is at the forefront of concrete reinforcement, anchoring, fastening and fixing technologies, with the design of lifting and connection systems for precast concrete and tilt-up concrete construction a particular speciality.

Reid products help solve construction problems and enable better performing buildings to be constructed more quickly, more efficiently, and at a lower overall cost.

At **Reid** we work with our customers to shape the future, through the development, testing and introduction of pioneering engineering technology, leading to new construction, connection, reinforcing and anchoring systems.

Our parent organisation, Illinois Tool Works Inc., is a global manufacturer of highly engineered products and specialty systems, with more than 800 business units located in 52 countries. The largest part of ITW is its activities in the construction market, which provides **Reid** with a vast resource base of engineering expertise that we draw on to continually improve, test and develop our core product range.



Test specimen: Round Bar Ferrule & Shear Bar

Reid is an ISO quality accredited supplier. At our main manufacturing facility, located east of Melbourne, we regularly test our products beyond the point of failure, to ensure industry can specify and use **Reid** products with absolute confidence.

Each year we pour tonnes of concrete, break dozens of panels and destroy hundreds of anchors in the pursuit of better performance, and to ensure the **Reid** brand is synonymous with the word "quality".

Reid started out supplying lifting products to the mining sector, and over the last 50 years the business has evolved to become one of the world's most innovative suppliers of products and services developed specifically for lifting precast and tilt-up concrete elements.

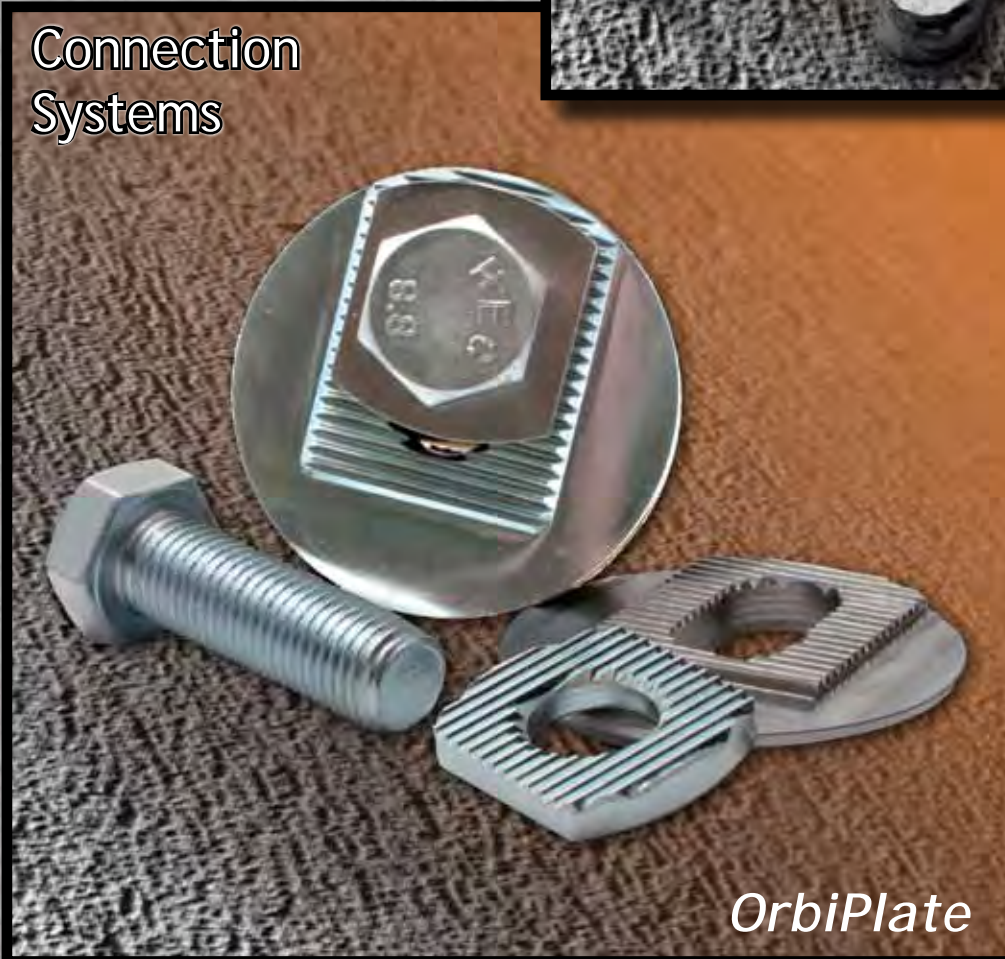
Reid's *SwiftLift*[™] and *JAWS*[™] lifting anchors and clutches have a proven performance record; safely meeting and overcoming some of the toughest lifting challenges imaginable.

Reid lifting systems deliver a great deal more than just a physical connection between crane and component. Think of them as risk management insurance made of steel.

Concrete Lifting Systems



Connection Systems



Sooner or later every precast concrete element has to be connected to something, or have something connected to it.

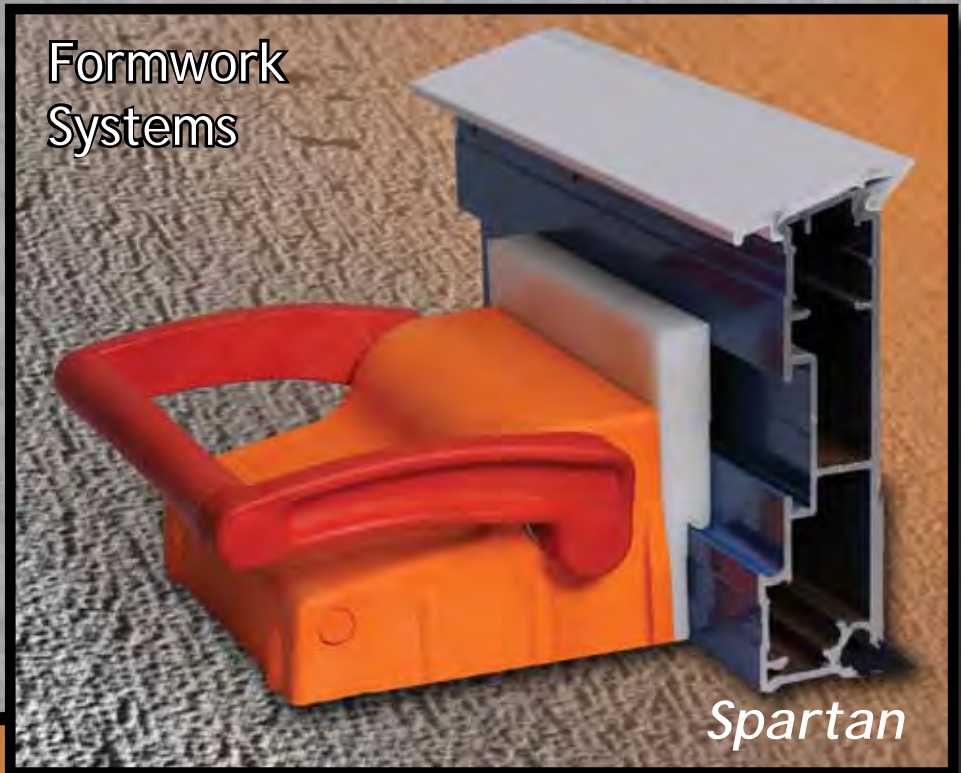
Reid offers a complete range of connection systems, including our new, patented *OrbiPlate*[™] system.

OrbiPlate offers amazing flexibility in steel / concrete connections. It is, quite literally, revolutionary.

Concrete offers incredible design freedom, but one demand it does make on builders and precasters is formwork able to withstand the high static loads wet concrete imposes.

Reid offers a complete range of formwork systems for slab casting that deliver strength and efficiency, including *Spartan*[™] and *GeniSys*[™] for factory precast, *Panelware*[™] for tilt-up construction, and *Macket Bracket*[®] for slab-on-ground.

Formwork Systems



Spartan

Reinforcing Systems



ReidBar

ReidBar[™] continuously threaded reinforcing bar is a revolutionary development in reinforcement placement and fixing. Offering unrivaled versatility, *Reidbar* allows reinforcing to be cut at any point and screwed into one of the large variety of *Reidbar* components.

ReidBar is designed as a "bar break" system - the *ReidBar* itself will yield well before the system connections. This provides engineers with the confidence to base structural design around the *ReidBar* as the limiting design factor. The result is ease of design, and construction efficiency through superior connections and continuous lengths of reinforcing bar, avoiding lapping or re-threading of reinforcement. By reducing steel scrap, installation time, and reinforcing congestion in concrete pours, *ReidBar* also offers reduced project cost and build time in construction.

Reid also produces *Studrail*[™] shear reinforcement and offers a range of complementary plastic and fibre concrete bar chairs and spacers, and a comprehensive range of panel connections and dowels.

Your source for the world's best concrete technology....



Release agents



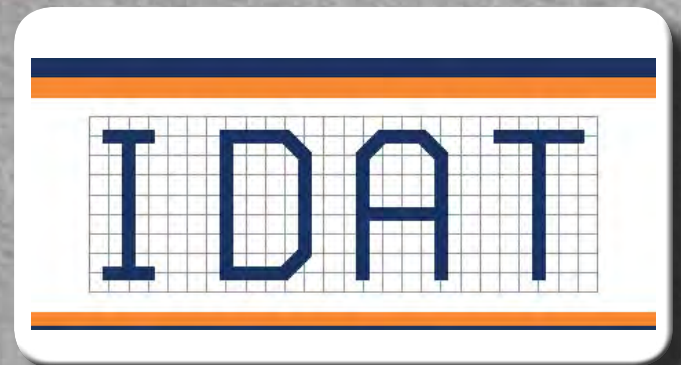
Architectural panel forms



Formwork brackets



Flexible concrete



CAD software for precast

1300 780 250

reid.com.au



Reid Construction Systems is a division of ITW Australia
TM - Trademarks of ITW Australia. The Reid device and Reid orange are trademarks of Reid.
©2011 Reid REID012011LMS