



## Sprayer User Guide - "REAL" Drum Top Sprayer

### Instructions For Use

- Position the "REAL" Drum Top Sprayer on top of the container you wish to dispense from and insert the clear plastic suction hose. The brass suction nozzle has been threaded so that a garden hose may be connected to it to lengthen the suction line or give the operator the ability to spray water. The maximum vertical self prime is 4.5m.
- Check the switch is turned to the "OFF" position, then connect to the power source. For the AC version, insert the plug into a grounded power outlet. For the DC version, connect the RED (+) clamp to the positive battery terminal. Then connect the BLACK (-) clamp to a grounded metal portion of the chassis or engine. For stand alone battery applications the BLACK (-) clamp may be connected directly to the negative battery terminal.
- Position spray wand tip into container to dispense from, squeeze the spraygun trigger, and move switch to the "ON" position to allow unit to prime. Alternatively, remove the spray control gun, insert end into container, move switch to the "ON" position and allow unit to prime.
- The pump is primed once straight liquid is discharged from the spray wand, rather than a mixture of air and liquid. When primed, move switch to "OFF" and connect the spray gun and wand if not already connected. If the product must be circulated before spraying, leave unit "ON" with hose or wand end in the container and allow product to circulate. The "REAL" DrumTop Sprayer is supplied with a recirculator kit which will continue to recirculate material during operation. Allow time for initial mixing before commencing spraying.



## **Maintenance & Care**

### **WARNINGS!**

- Always unplug unit before attempting to service.
- Release pressure before disconnecting spray gun and spray wand.
- Disconnect or unplug unit when not in use.
- Never immerse pump.

Must be cleaned after every use:

- After spraying, remove the suction hose from the container. Insert the wand tip into the container and squeeze the spray gun trigger. Allow the unit to expel the unused material back into the container. The wand and spray tip are left attached for this process to provide a back pressure that will help expel 90% of the unused material out of the unit.
- Remove unit from the spraying solution container, and circulate either soap and water, diesel or other recommended cleaning solution through the unit until it comes out clean and clear. NEVER USE XYLENE.
- Drain all liquid from the pump. Do NOT allow liquid to freeze in the pump. Failure to do so will result in damage to internal components of the pump.

## **Trouble-shooting**

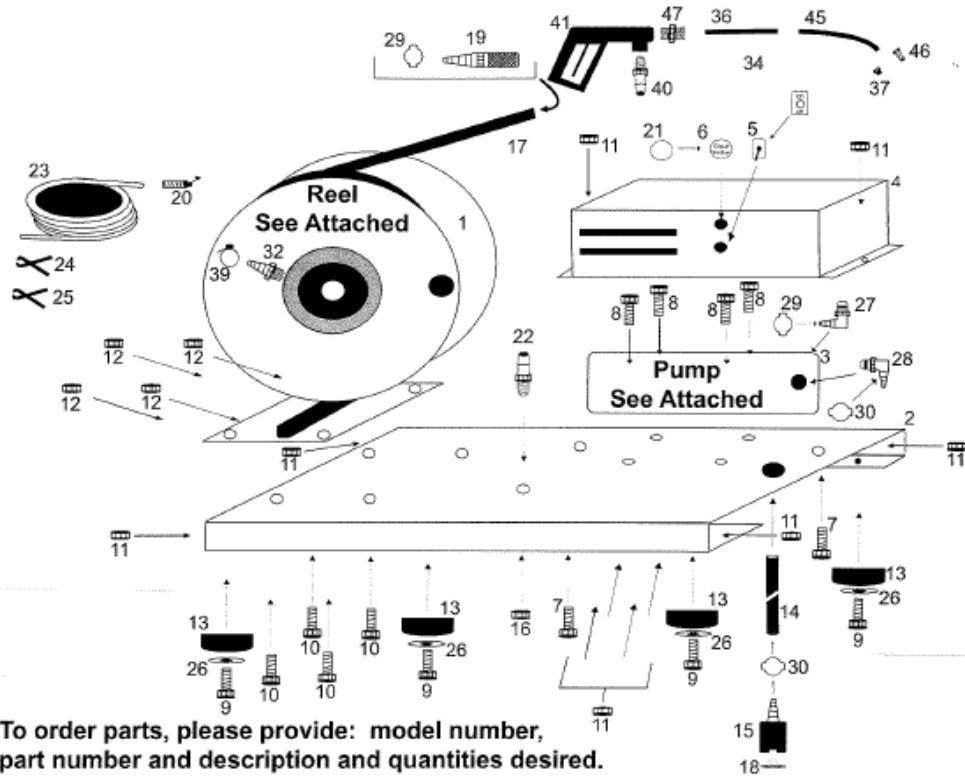
<b>Fault</b>	<b>Action</b>
Pump will not start	Check the circuit breaker
	Check for proper voltage (+/-10%) & good electrical connections
	Check pressure switch for proper operation
	Check motor for an open or grounded circuit
	Check for a locked drive assembly
Leaks from pump head or switch	Check for loose screws at the switch or pump head
	Switch diaphragm may be torn or pinched
	Check pump diaphragm for tears or holes



Noisy or rough operation	Check for loose upper housing or drive screws
	Is the surface that the pump is sitting on magnifying the normal noise?
Pump will not prime	Out of product
	Check for debris in the strainer
	Check for a vacuum leak in the suction tube
	Check suction tube & outlet hose for kinks or clogs
	Check for debris in the valve plate
	Check for proper voltage (+/-10%) with the pump operating
	Check upper housing for cracks
	Be sure that the shut-off valve or spray tip is open & free of debris.
Pump will not shut off	If a recirculator is installed it will need to be turned up to 175psi for the pressure switch to operate
	Check that the outlet hose is closed & does not leak
	Check for trapped air in the head or outlet hose
	Check for proper voltage (+/-10%) to pump
	Check valve assembly for wear
	Check for loose drive assembly or upper housing screws
	Check pressure switch to be sure it has not been moved out of adjustment



### REAL Drum Top Sprayer Parts Diagram



### Reel & Pump Part Diagrams

